

IWC/J16/CCPM/10

IWC/J16/SC-CC/03 Conservation Committee Draft Public Facing Strategy 2016-2026

Government of Australia



INTERNATIONAL
WHALING COMMISSION

REQUEST FOR FEEDBACK

CONSERVATION COMMITTEE DRAFT PUBLIC FACING STRATEGY 2016 – 2026

At the 2015 planning meeting, the Conservation Committee agreed to develop an outward facing strategic plan. The appended draft Strategy has been developed by Australia as a simple and visual description of the Committee's purpose, work, priorities, and its relationship to other committees and bodies. It has been designed as a public and forward focused document, which can act as an overarching guide for more detailed internal work plans being developed under the Committee and its Working Groups. The current content is indicative and intended to facilitate discussion.

Australia welcomes general feedback on the draft Strategy, including on the overall suitability of the proposed model and its linkages with other strategic documents.

Australia is able to coordinate finalisation of the Strategy with input from Committee members and Working Groups.

A brief rationale behind each component of the draft Strategy follows, with key feedback and discussion points included where relevant (in *italics*).

PAGE ONE

The first page of the draft Strategy provides the vision, objectives, priorities and measures of success for the Committee.

Vision

This component has been left blank, pending input from the UK as agreed at the 2015 planning meeting.

- *Is this structure/space consistent with work that the UK may have developed to date?*

Objectives

These are intended to encompass the high level and long term objectives of the Committee over the next ten years and beyond.

Priorities

The proposed priorities are a mix of management tools and threats.

- *Would it be better to break this up into priority tools and threats?*
- *Are any key priorities missing?* For example, chemical pollution and priority habitats are referenced in the detailed work plan of the Conservation Management Plans Working Group, but we are not aware of these issues being raised in context to the wider Committee to date.

Measures of success

These are intended to reflect the ideal outcomes of the Committee over ten years and beyond, rather than duplicate the objectives.

PAGE TWO

The second page provides detail on how the Committee intends to implement the Strategy outlined on page one.

Structure

This component reflects the current structure of the Committee, to be updated as required (for example, it might be preferable in future to establish groups which more directly align with most/all priorities listed on page one).

- *Would it be better to include cross-references and/or links to the more detailed internal strategic plans being developed under each Working Group, or are these documents not suitable for publication?* (for example, the Ship Strikes Strategic Plan).
- Australia will request content for this component from Committee and Working Group chairs during (or soon after the conclusion of) current meetings.

Partnerships

This component outlines relationships between the Conservation Committee, the wider Commission and external stakeholders. This provides a tangible link back to the third proposed objective on conservation agenda collaboration, which has been recognised as a goal since the establishment of the Committee.

Resourcing

This outlines the current sources of funding available for conservation initiatives through the Commission, to be updated as required.

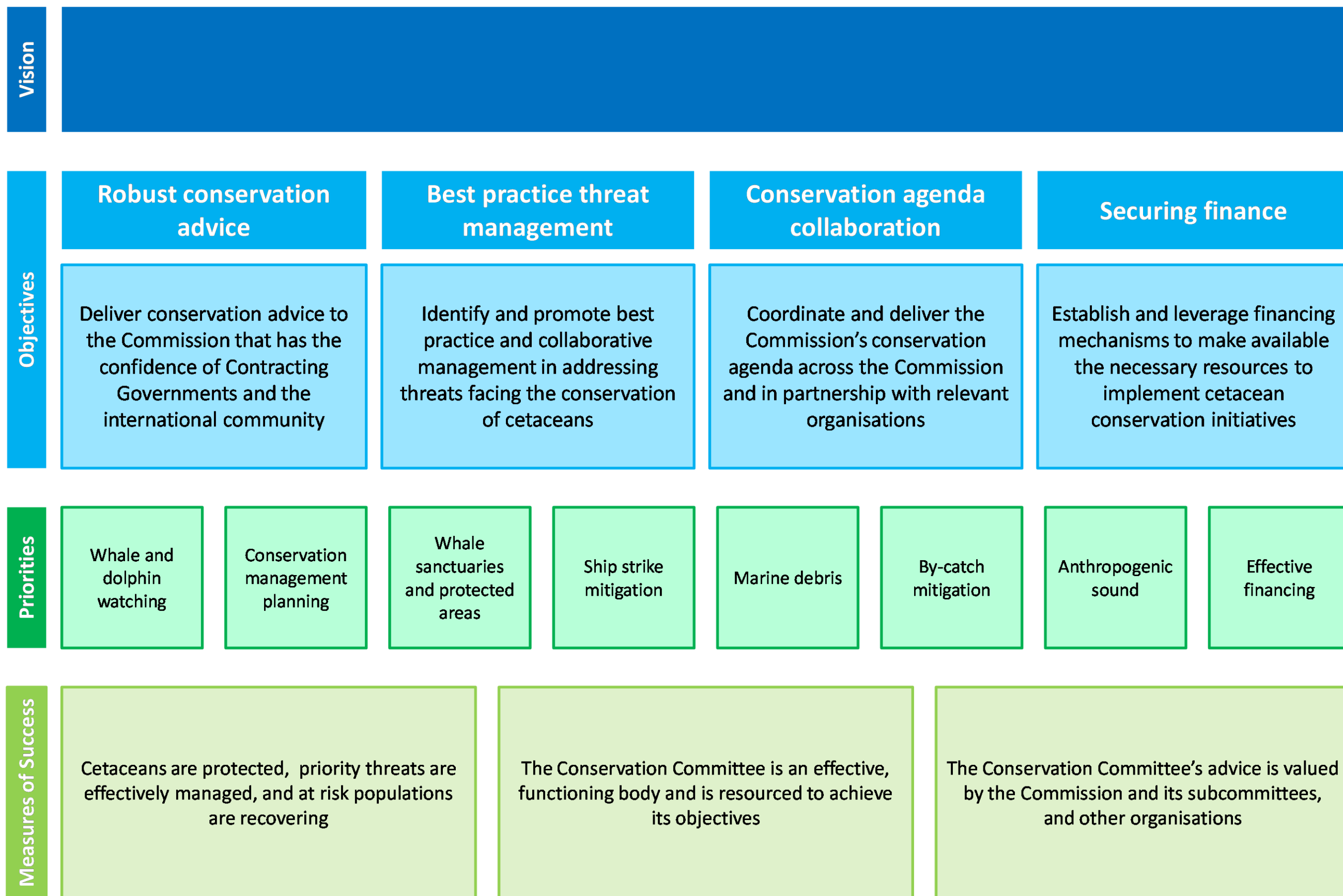
- *Should the Small Cetaceans and CMPs funds be considered sub-components of the Voluntary Conservation Fund as listed?* (noting the Secretariat may be able to confirm this).
- The IWC – other work fund provides resourcing for activities that could arguably be classified as conservation initiatives. *Is the Committee comfortable with including this as a source of funds?*
- *Are there any current sources of conservation funding missing from this component?*

Commitments and purpose of strategic plan

This component details the more tangible commitments that the Committee can make in agreeing to implement the draft Strategy, and provides the public with brief background on why a strategy is required.

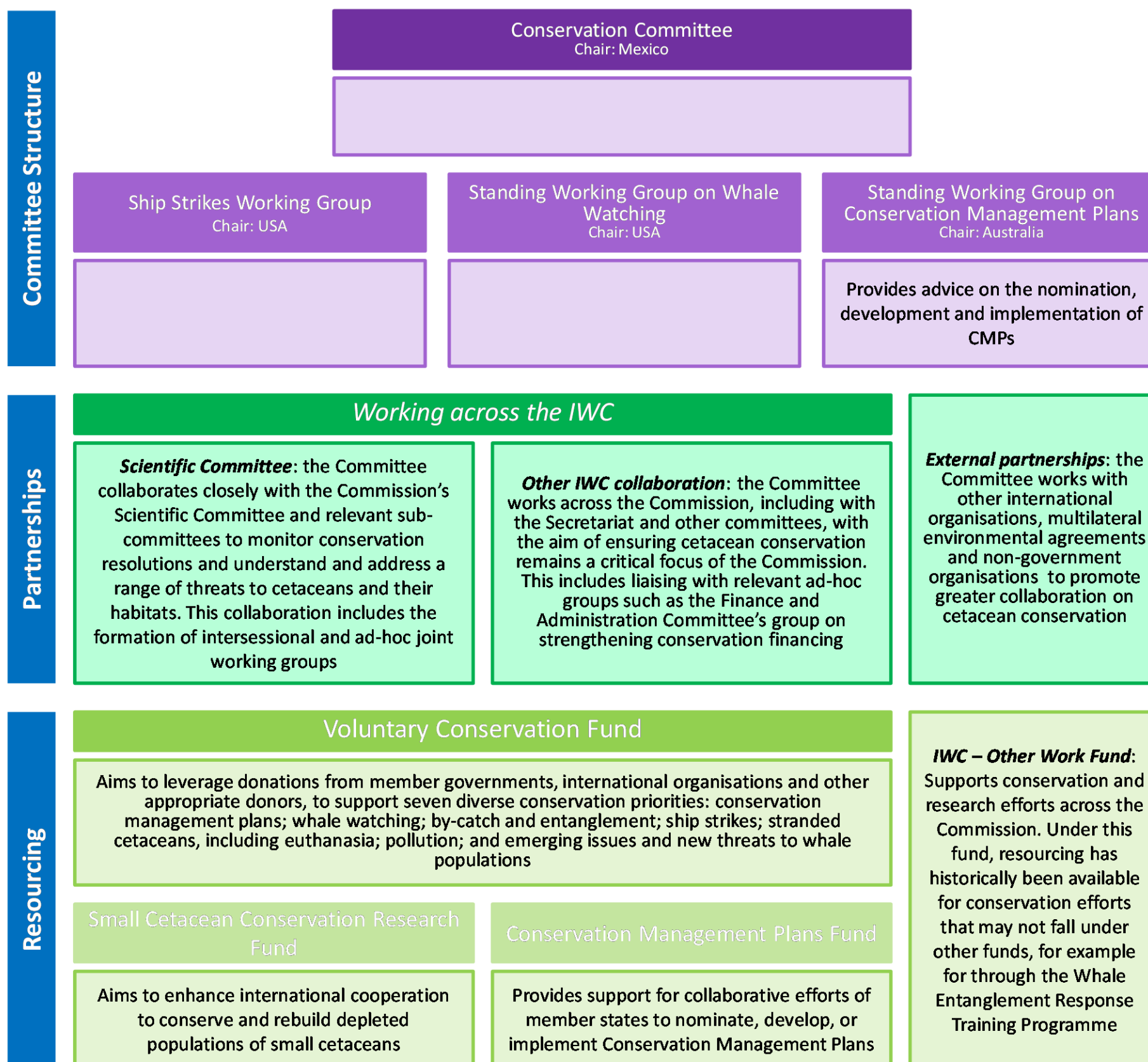


Conservation Committee: Strategic Plan 2016-2026



Conservation Committee: Strategic Plan 2016-2026

HOW WE WORK



Why do we need a Strategic Plan?

Article V(1)(a) of the *International Convention on the Regulation of Whaling* provides that the Commission may adopt measures with respect to the conservation of whale resources. The *Berlin Initiative on Strengthening the Conservation Agenda of the International Whaling Commission* (2003-1) led to the establishment of the Conservation Committee as a way to meet this objective under the Convention. This plan sets out a renewed vision for the Committee, and specifies a program of work and the outcomes to be delivered, over the next decade, to support the sustainable non-lethal use of cetaceans and to address environmental and anthropogenic threats facing cetaceans. The plan is also intended to guide and inform the strategic direction of detailed work plans of the Committee and its various working groups. It is also intended to be a live document which will be updated in line with the evolving priorities of the Committee.

The Conservation Committee's commitments in delivering this Plan

The Committee will provide advice on, and implement as required, conservation initiatives to support the Commission in safeguarding for future generations the great natural resource represented by cetaceans

The Committee's work will be conducted in collaboration with the Scientific Committee and other IWC committees as required

The Committee will meet annually to review the work of the sub-committees and working groups delivering its programs, and to facilitate collaboration with key partners

The products and guidance developed by the Committee will be made available on the Commission's website for use by Contracting Governments and other interested parties